



Power Brick +

48v Lithium-Ion battery pack



48V battery pack - Lithium Iron-Phosphate (LiFePO₄) - 72Ah

- **High Service Life : 3000 cycles** and more (see chart)
- **Deep discharge** allowed up to 100 %
- Ultra safe **Lithium Iron Phosphate** chemistry (no thermal run-away, no fire or explosion risks)
- **Embedded BMS** (Battery Management System) : **improve lifespan AND secure the battery**
- No **Lead**, no **rare earths**, no **acid**, no **degassing**
- Calendar life > **10 years**
- Excellent **temperature** robustness (-20 °C up to +60 °C)
- **Flexible** deployment : up to 16 packs in parallel and 4 in serial
- **Constant power** during discharge (very low internal resistance)
- **Very low Peukert's losses** (energy efficiency of 98 %)
- **Very low self discharge** (<3 % per month)
- **No memory effect**
- About **50 % lighter** and **40% smaller** than equivalent Lead-AGM battery with same usable energy
- **Certification : CE, RoHS, UN 38.3**

Technical Specifications

Electric	Nominal voltage	51.2 V
	Nominal capacity	72 Ah
	Stored energy	3.69 kWh
	Internal resistance	≤ 50 mΩ
	Cycles	>3000 cycles (see chart)
	Self discharge	< 3% per month
	Energy efficiency	98 %
Standard Charge	Charge voltage	57.6 V ± 0.8V
	Charge mode	CC/CV : Constant Current / Constant Voltage
	Continuous charge current / Maximum charge current	35 A / 70 A
	BMS charge cut-off voltage	59.2 V ± 0.4V
Standard Discharge	Instant peak discharge current	250±30 A (max 100mS)
	Continuous discharge current	90 A (4.61 kW)
	Maximum discharge current (< 30s)	130 A (6.57 kW)
	BMS discharge cut-off voltage	40V
Environment	Charge temperature range	0°C to +60°C
	Discharge temperature range	-20°C to +60°C
	Storage temperature	0°C to +50°C @60±25% relative humidity
	IP protection level	IP 66
Mechanical	Cell assembly	26650 - 16S19P
	Casing material	ABS
	Dimensions	L : 500mm (520mm) x P : 239mm x H : 217 mm
	Weight	31.2 kg
	Terminal	M8 bolt



APPLICATIONS

- **Electrical vehicles and utilities**
- **Robotics and AGVs**
- **Solar and wind energy storage**
- **Marine**
- **Street lightning**
- **CCTV and security camera**
- **UPS, electric back-up**
- **Telecom**
- ...

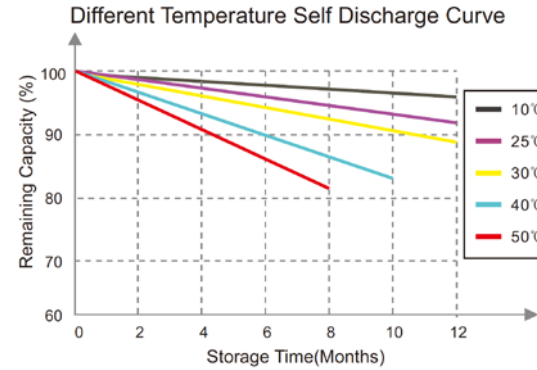
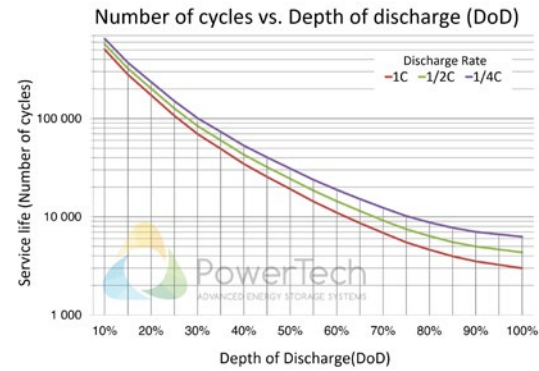
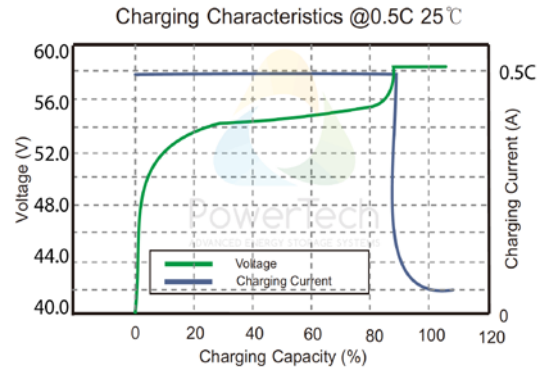
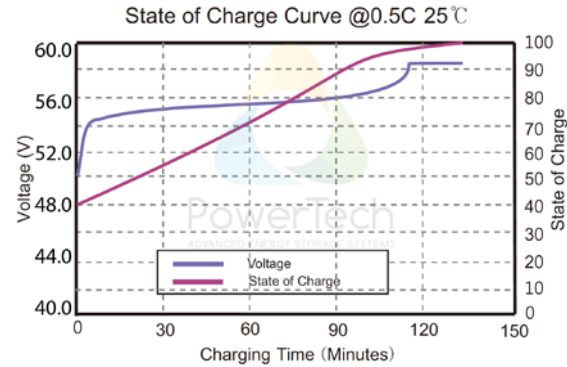
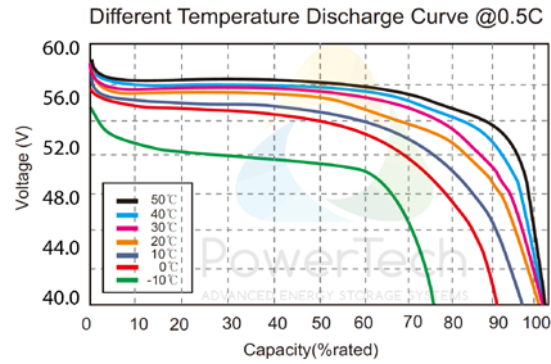
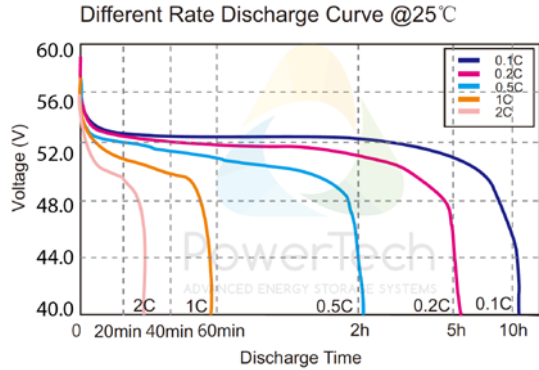


PowerBrick+

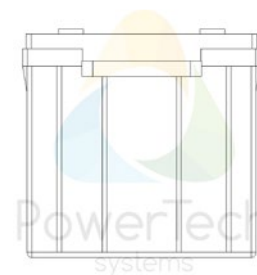
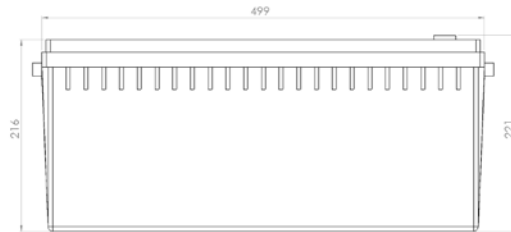
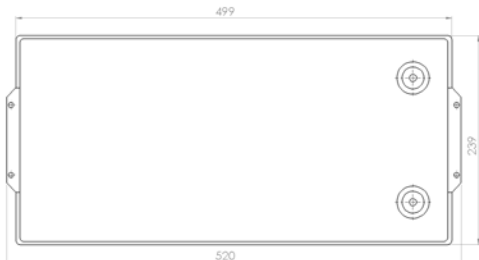
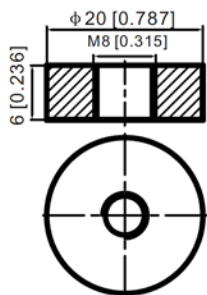
48v Lithium-Ion battery pack



Charts and curves



Dimensions



Ship Control Srl
Via dei Ghivizzani 1743B
Loc. Piano di Mommio
55054 - Massarosa - LU

www.shipcontrolstore.it
+0584 1660878
info@shipcontrol.it